

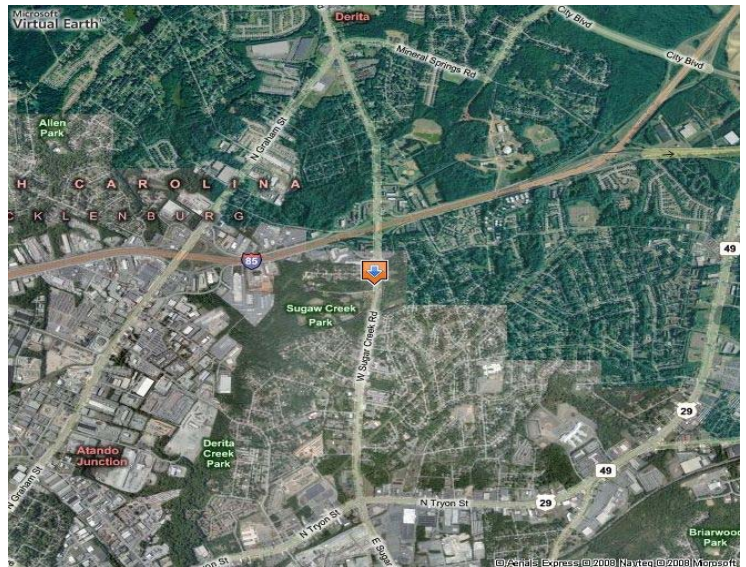
1025 West Sugar Creek Road Charlotte, NC



Land For Sale- \$761,211

PROPERTY HIGHLIGHTS

- 10.89 Acres
- Selling subject to being rezoned Multi-Family
- Parcel ID#’s: 08707122, 08707123, 08707124 & 08707151
- All utilities at site
- 1,500’ of Road Frontage on Merlane Drive
- Located next to City Park and Frisby Course



CONTACT INFORMATION

Mike Brown
704.370.3000 Ext. 330
mbrown@southeastcommercial.com
www.southeastcommercial.com

SOUTHEAST
Commercial Real Estate Group Inc.