

# Tower Point

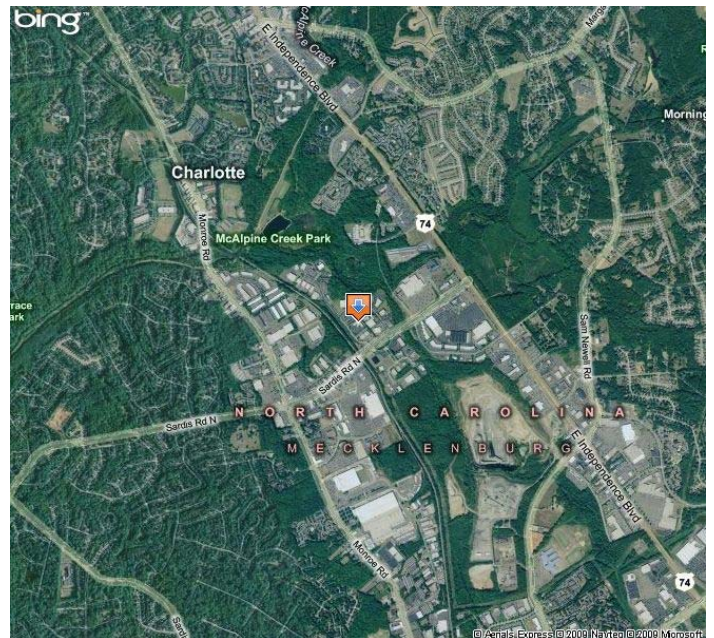
## 8501 Tower Point Drive



**For Lease- \$14.00/SF**

### PROPERTY HIGHLIGHTS

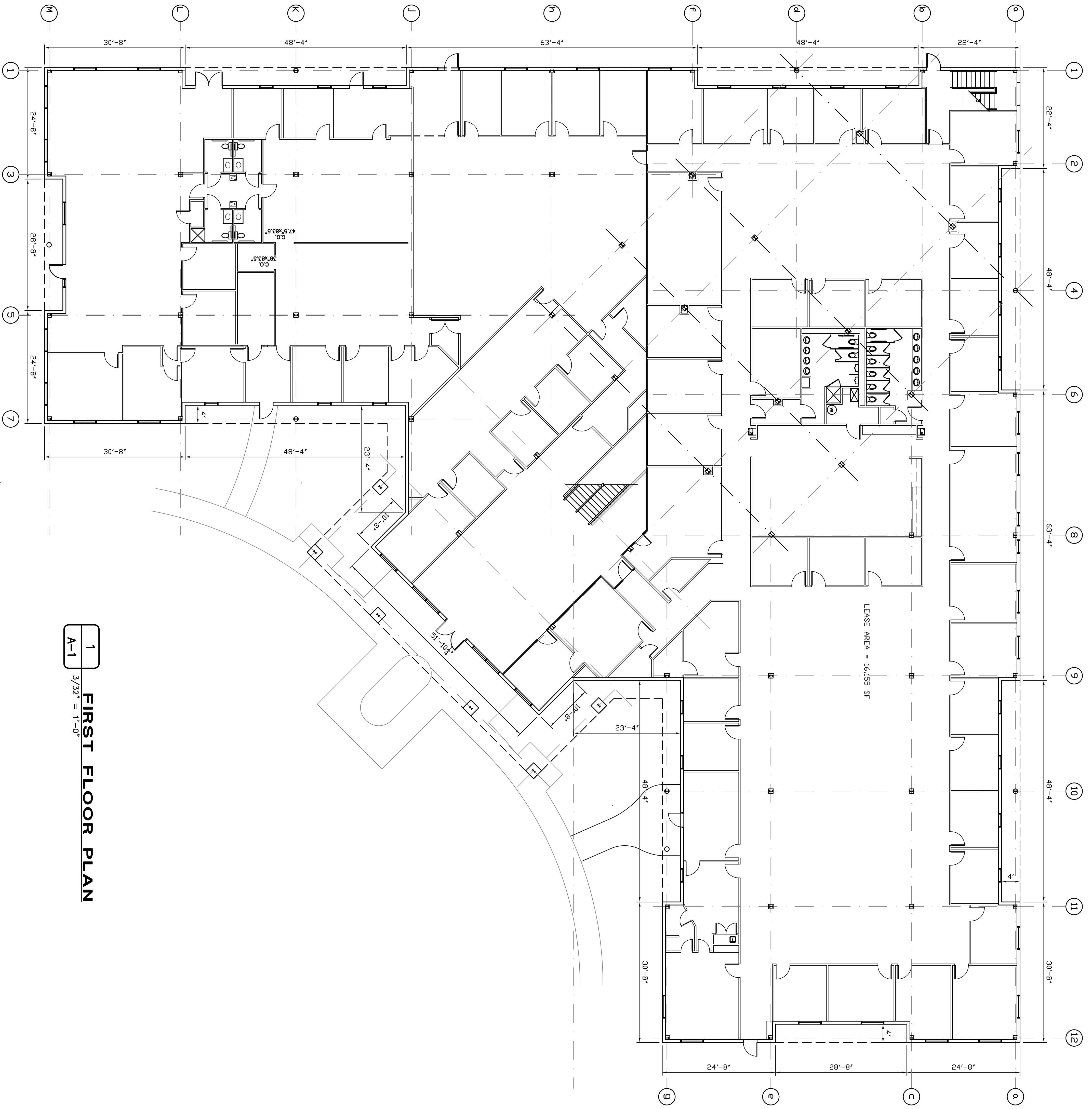
- 4,000 SF Office Space Available
- Matthews area
- Convenient to Highway 74; McAlpine Greenway located nearby
- Numerous restaurants and day care facilities in the immediate area
- Impressive entrance
- Adequate parking



### CONTACT INFORMATION

Harry Cole or Don Myers  
704.370.3000  
[hcole@southeastcommercial.com](mailto:hcole@southeastcommercial.com)  
[dmyers@southeastcommercial.com](mailto:dmyers@southeastcommercial.com)  
[www.southeastcommercial.com](http://www.southeastcommercial.com)

**SOUTHEAST**  
Commercial Real Estate Group Inc.



1  
A-1  
FIRST FLOOR PLAN  
3/32" = 1'-0"

Existing Buildings Drawings  
Not for Construction

A-1

© COPYRIGHT  
MGB  
Project No:  
8501  
Scale:  
Date Drawn:  
Sheet Title  
FIRST FLOOR  
PLAN

Building Layout  
8501-A Tower Point Drive  
Charlotte, North Carolina 28227

NO.	REVISIONS	DATE

**WILLIAM E. BRUCE**  
Construction Consultant  
8501-A TOWER POINT DRIVE  
Charlotte, NC 28227  
Phone (704) 846-2327, Fax (704) 846-4866