

Riverwood Parkway Gastonia, NC



For Sale
\$120.00/SF Shell
\$165.00/SF Upfitted

PROPERTY HIGHLIGHTS

- Office Condos to be built
- Unit sizes from 1,500 SF to full building 7,600 SF
- Office/Medical use
- Bustling area of Gastonia, NC on Riverwood Parkway
- All utilities on site

BEFCOR

Business Expansion Funding Corporation

Benefits of SBA 504 Financing

- Purchase owner-occupied commercial real estate with a down payments as low as 10%
- Loan processing fees temporarily waived under Stimulus Package
- Receive the tax benefits and appreciation on the real estate and lock in occupancy costs
- Lower down payment preserves cash for working capital & other business expansion
- Finance soft costs (fees for appraisals, environmental, architectural & engineering fees)

How it works?

BEFCOR provides up to 40% of the financing at a long-term competitive fixed rate and then partners with a commercial lender to provide 50% of the permanent financing. BEFCOR works with its lending partner and borrower during all steps to process, to approve, close and service its loan.

For more information contact: Richard Bargoil, Executive Director at 704.442.8145, Ext. 22 or email rbargoil@befcor.com or go to our website at www.befcor.com

CONTACT INFORMATION

Harry Cole or Don Myers
704.370.3000
hcole@southeastcommercial.com
dmyers@southeastcommercial.com
www.southeastcommercial.com

SOUTHEAST 
Commercial Real Estate Group Inc.

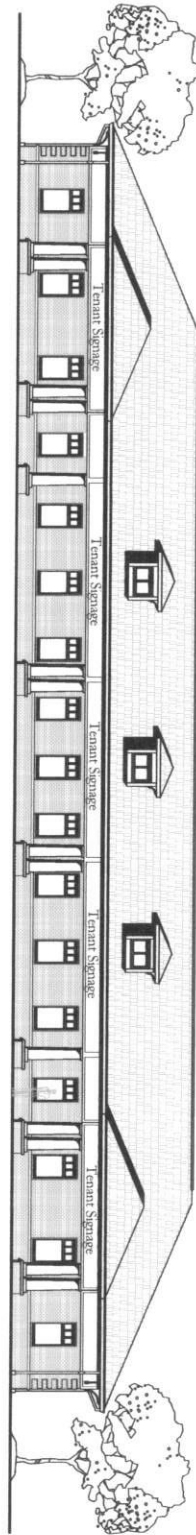


RIVERWOOD COMMERCIAL CONDOS
SITE PLAN

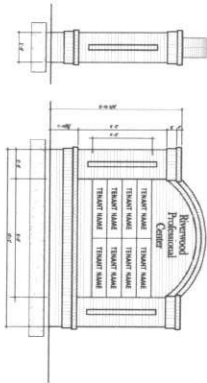
GASTONIA, NORTH CAROLINA

SEPTEMBER 8, 2008

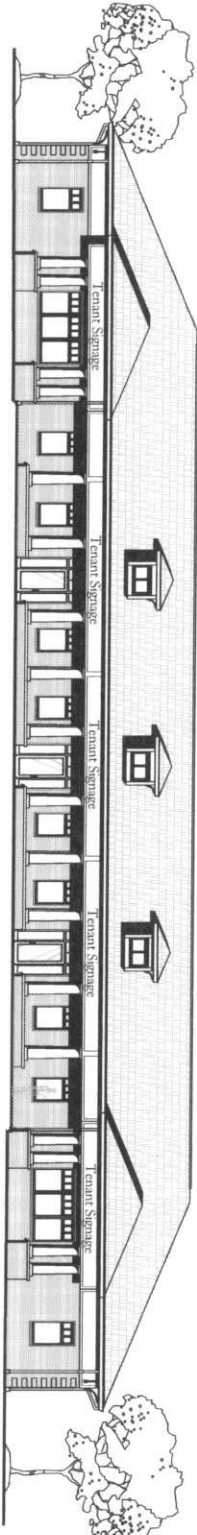
RED	REAL ESTATE DEVELOPMENT PARTNERS
P.O. Box 35193 Charlotte, NC 28235	T - 704.333.7997 F - 704.333.7993



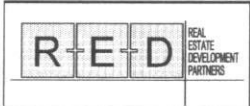
1 RIVERWOOD ELEVATION
SCALE = 1/4"



3 SIGN ELEVATION
SCALE = 1/2"



2 ENTRANCE ELEVATION
SCALE = 1/2"



RIVERWOOD CONDITIONAL ELEVATION



Project Date: 14 NOVEMBER 2008
 Revision Date: 29 JANUARY 2009

Sheet Title: OFFICE CONDO ELEVATION
 Location: GASTONIA, NC

Sheet Number: A1