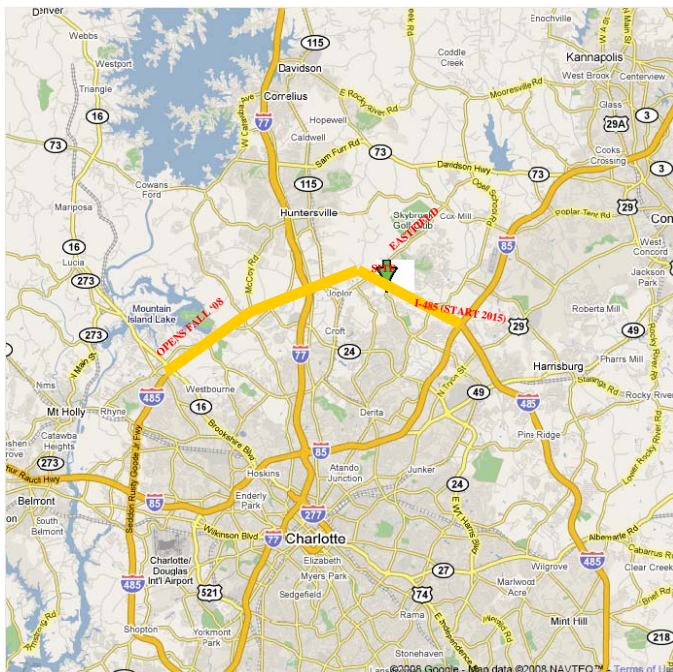
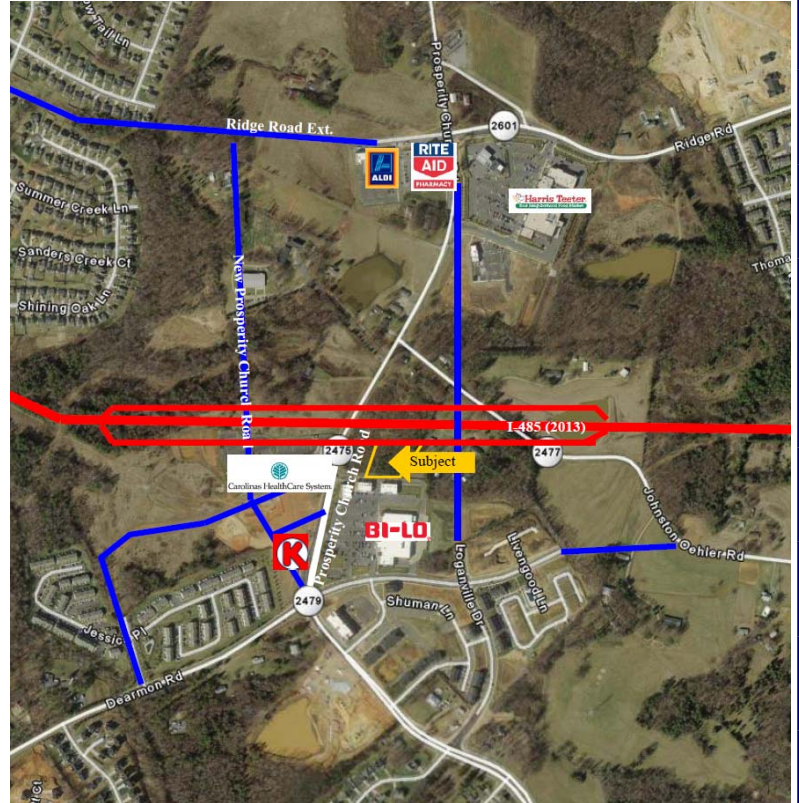


FOR SALE

5416 PROSPERITY CHURCH ROAD

- 2.57 Acres located on a hard corner of the future Prosperity Church Road (I-485) interchange
- Zoned R-3; The small area plan endorses “Mixed Commercial”
- 275’ of frontage on Prosperity Church Road & 425’ of frontage on future DOT ROW
- All utilities nearby & topography is level
- Seller may consider subdividing the rear of the property
- Traffic Count—18,200 VPD



\$700,000/ ACRE

Contact:

MICHAEL KEISER

704-370-3000 Ext. 349

mkeiser@southeastcommercial.com

SOUTH EAST
Commercial Real Estate Group, Inc.

1401 West Morehead Street, Suite 125 • Charlotte, NC 28208

704-370-3000 • fax 704-370-6507

www.SoutheastCommercial.com