

# 1609 Industrial Center Circle Charlotte, NC



**Sale: \$749,000**

**Lease: \$6.00/ SF NNN**

## PROPERTY HIGHLIGHTS

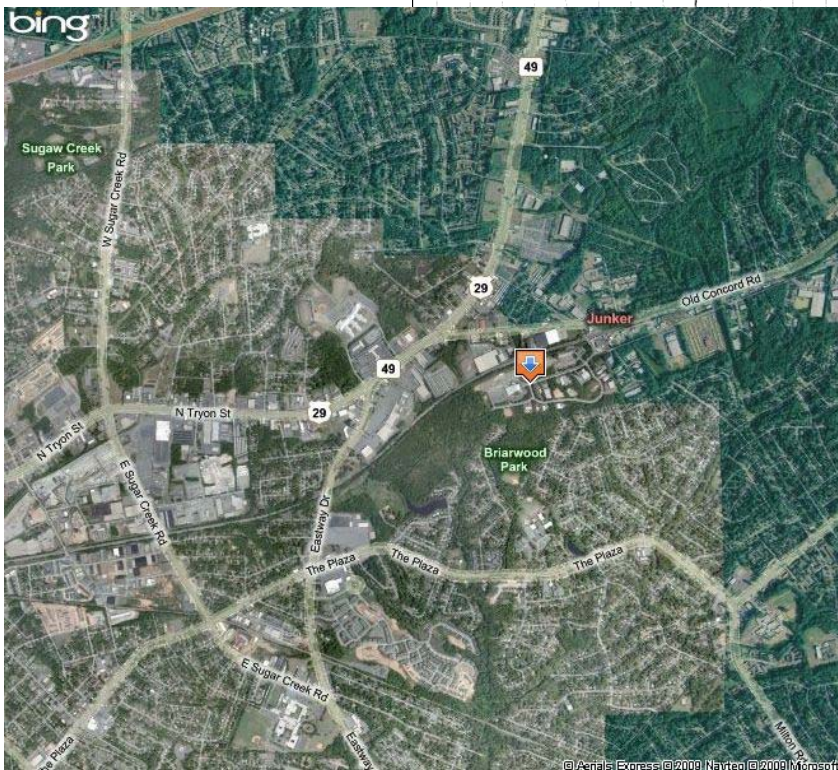
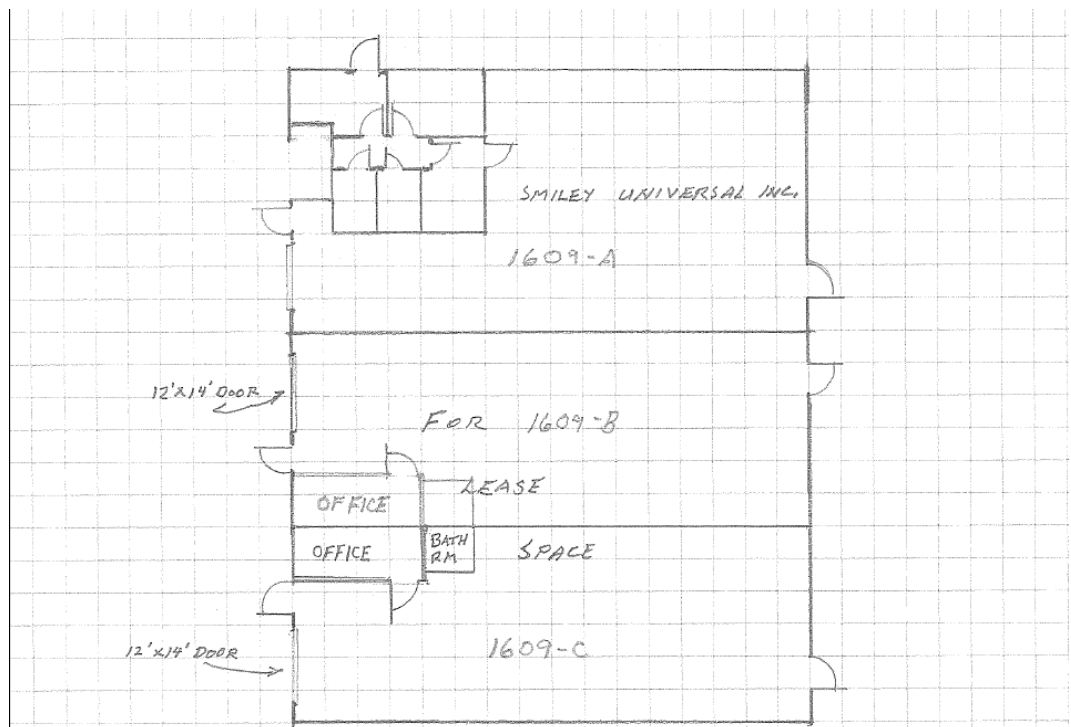
- 8,000 SF Industrial Building
  - Zoned I-1
  - 18' Clear Height
  - Ideal Contractor Building located in quiet Industrial area
  - New Construction
  - Gravel yard
- Units
- Unit B: 2,400 SF
  - Unit C: 2,400 SF
  - Units can be combined
  - Convenient to North Tryon Street and the University area

## CONTACT INFORMATION

Buddy Kirby  
704.370.3000 Ext. 352  
[bkirby@southeastcommercial.com](mailto:bkirby@southeastcommercial.com)  
[www.southeastcommercial.com](http://www.southeastcommercial.com)

**SOUTHEAST**   
Commercial Real Estate Group Inc.

# Floor Plan & Aerial Map



1609 INDUSTRIAL CENTER  
CIRCLE  
SCALE: 1" = 20'

## CONTACT INFORMATION

Buddy Kirby  
704.370.3000 Ext. 352  
[bkirby@southeastcommercial.com](mailto:bkirby@southeastcommercial.com)  
[www.southeastcommercial.com](http://www.southeastcommercial.com)

**SOUTH EAST**  
Commercial Real Estate Group Inc.