

Dublin Realty

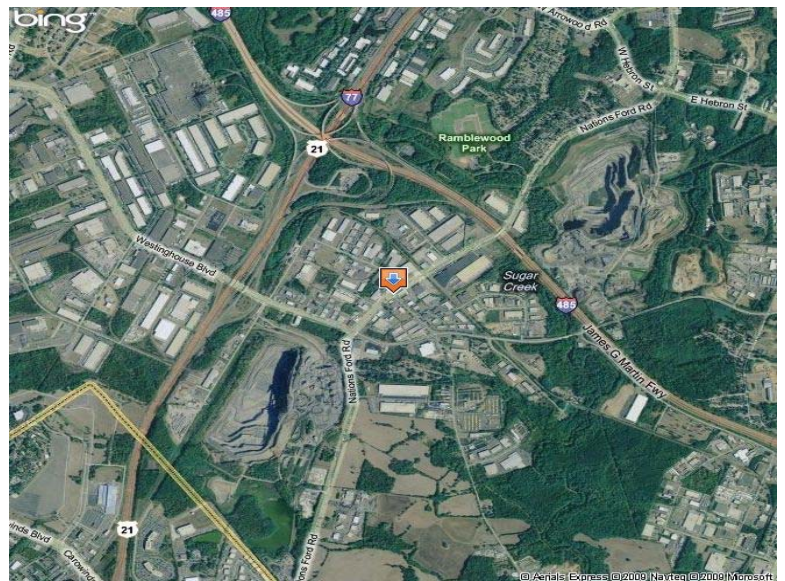
10907 Downs Road



For Sale: \$775,000
Lease: \$8.75/SF NNN

PROPERTY HIGHLIGHTS

- **8,640 SF Flex Building**
- **60% Office Space and 40% Warehouse Space**
- **Brick Constructed Building**
- **Zoned I-2**
- **Convenient to I-77, I-485, South Charlotte off Westinghouse Boulevard and Nations Ford Road**
- **1 Dock High Door & 1 Drive-In Door**



CONTACT INFORMATION

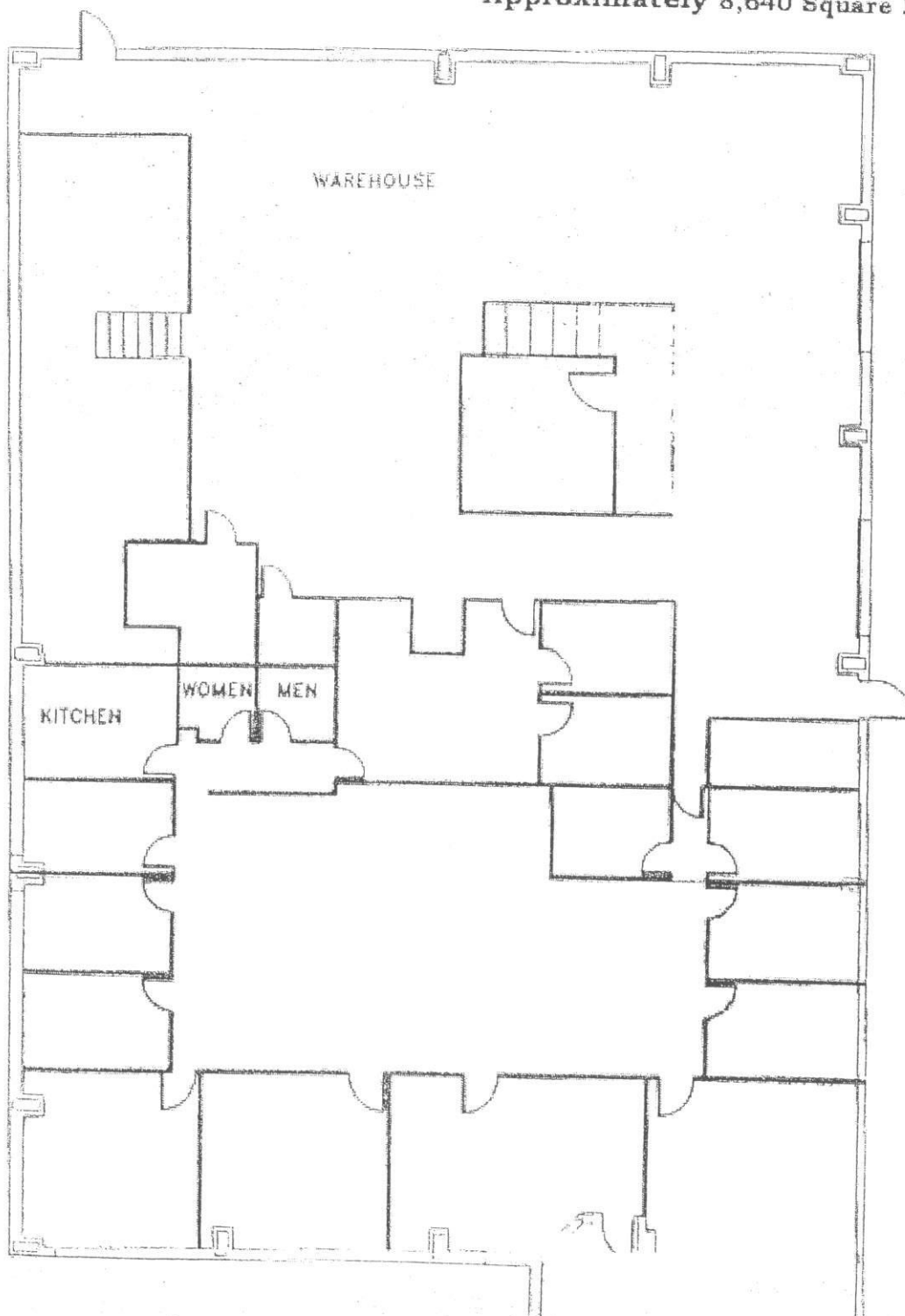
Buddy Kirby
704.370.3000 Ext. 352
bkirby@southeastcommercial.com
www.southeastcommercial.com

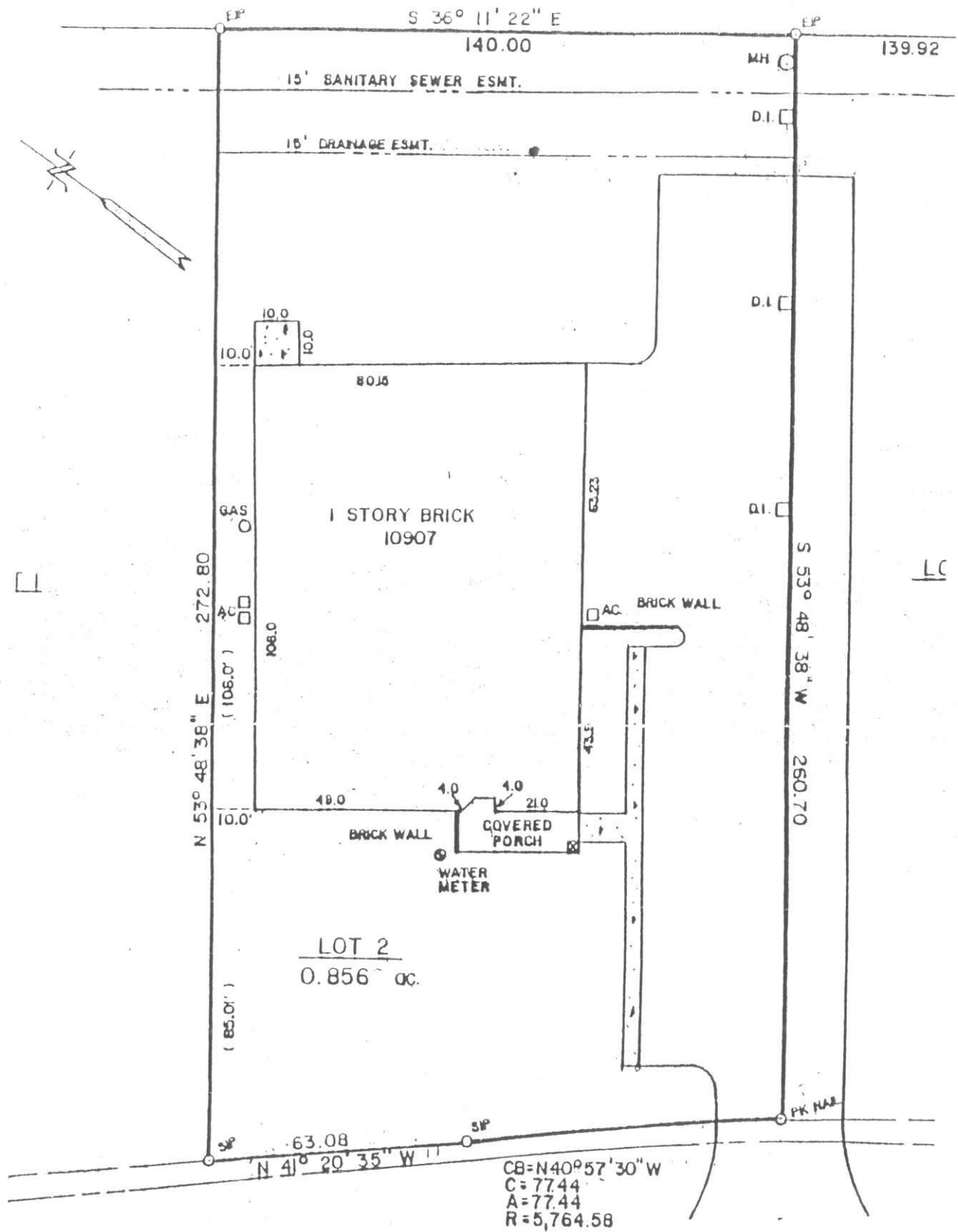
SOUTHEAST
Commercial Real Estate Group Inc.

10907 Downs Road

Charlotte, NC 28134

Approximately 8,640 Square Feet





DOWNS RD.

BUILDING SETE
 FRONT 40'