

# 1633 Dewberry Terrace Charlotte, NC

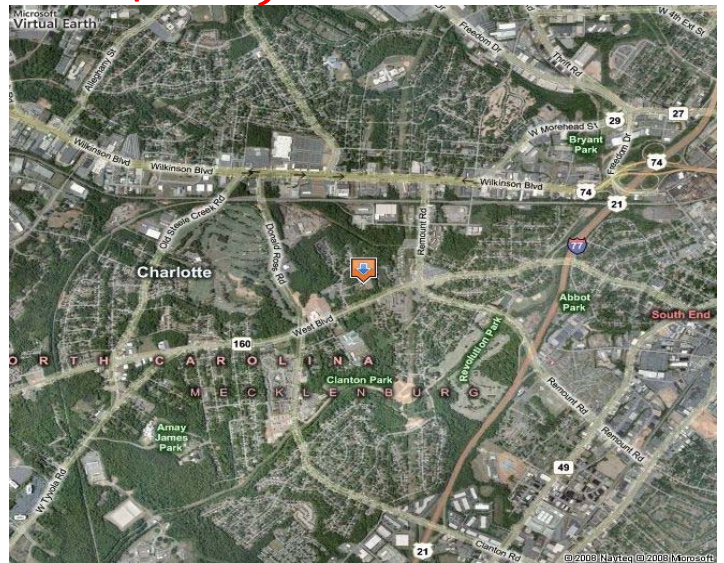


## Reduced Price- \$90,500

### PROPERTY HIGHLIGHTS

- +/- 1 Acre
- Zoned R-22
- Flat Topography
- Land has been cleared
- Parcel ID#: 11702202
- Located within close proximity to Shopping, Transportation, Medical, Public Library and New YMCA

**Priced to Sell Quickly**



### CONTACT INFORMATION

Teresa Wilson  
704.370.3000 x823  
[twilson@southeastcommercial.com](mailto:twilson@southeastcommercial.com)  
[www.southeastcommercial.com](http://www.southeastcommercial.com)

**SOUTH EAST**  
Commercial Real Estate Group Inc.